

CREATING BETTER FUTURES THROUGH WORKPLACE GIVING



Making small, regular donations to The Smith Family every payday is an easy way to support the education of young Australians in need.

We believe that education is one of the most powerful change agents, and we help children and young people to overcome educational inequality caused by poverty – so they can thrive now and into their futures.



We support the education of almost

63,000

young Australians
in need.



In 2022–23, more than

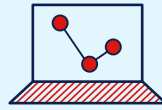
162,000

children and young people
participated in our programs.



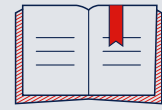
\$5

can provide a pack of
coloured pencils to help
nurture a child's creativity.



\$10

can provide a child with
headphones to engage in
online learning from home.



\$25

can provide a literacy
resource pack, so parents
can help improve their
child's reading skills.



\$55

a month will allow you to sponsor
the education of an individual
child in need.



BONUS!

Donations through Workplace Giving
are taken out of your pay before tax,
reducing your taxable income.

TO FIND OUT MORE ABOUT OUR AWARD-WINNING PROGRAM, CONTACT YOUR PAYROLL TEAM
OR EMAIL US AT WORKPLACEGIVING@THESMITHFAMILY.COM.AU

CREATING BETTER FUTURES THROUGH WORKPLACE GIVING



Making small, regular donations to The Smith Family every payday is an easy way to support the education of young Australians in need.

We believe that education is one of the most powerful change agents, and we help children and young people to overcome educational inequality caused by poverty – so they can thrive now and into their futures.



3 CO-WORKERS

could each give up one coffee a week and instead support the education of one child in need over a year!



DOUBLE YOUR IMPACT

Ask your employer if they can match your donations to The Smith Family.



13 CO-WORKERS

could each give \$10 a week over a year. More than enough to support the education of 10 children annually.

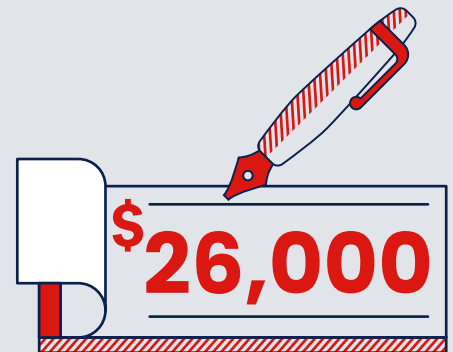
25 CO-WORKERS

could each give \$10 a week. That adds up to a yearly gift of \$13,000.

$$25 \times \$10 \times 52 = \$13,000$$

+ MATCHING

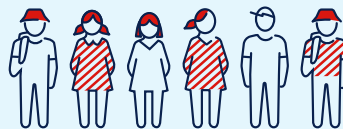
And if your employer matches gifts, that's a whopping \$26,000 to support children in need!



Almost

63,000

students supported on our Learning for Life program.



More than

162,000

young Australians participated in our programs.



TOO EASY!

Workplace Giving is managed through your Payroll Team, so they do all the hard work for you.

TO FIND OUT MORE ABOUT OUR AWARD-WINNING PROGRAM, CONTACT YOUR PAYROLL TEAM OR EMAIL US AT WORKPLACEGIVING@THESMITHFAMILY.COM.AU